

PUMP-FEEDERS

Mepaco® pumping solutions provide an alternative material handling option to the traditional methods of dumping, screw or belt conveying.

Mepaco® Pump Feeders provide low-profile surge capacity where space is limited. Depending on the application, an optional leveling ribbon can be added to prevent bridging or recirculation of product.

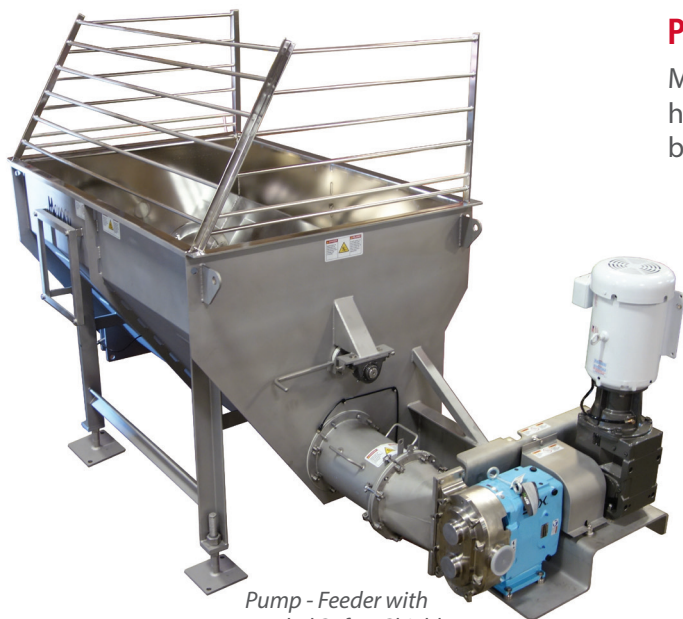
The benefit of a Mepaco® Pump Feeder design is to provide a “first in – first out” product delivery to mitigate shear, temperature rise or other changes that would impact product integrity.

APPLICATION CUSTOMIZATION

- Single or dual agitators
- Heating or cooling jackets
- Insulation and cladding
- Vacuum construction system
- Cover options: split, rear or side hinge, and slide
- Variable speed drives
- Vacuum construction
- Vacuum cooling package
- Electropolished interior finish
- CIP seal assemblies, spray balls

Controls

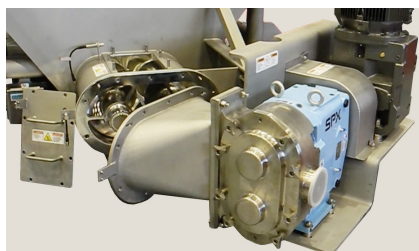
- NEMA 4x controls: recipe and batch
- Multistep control packages
- Heavy-duty drive upgrade
- Full temperature control
- Storage and data Acquisition
- HMI (Human Machine Interface)



Pump - Feeder with extended Safety Shields



Pump - Feeder with ASME heat transfer jacket to maintain product temperature and CIP (clean-in-place) system



Swing away pump mount with compression tube access cover removed



Electropolished food contact surfaces



Leveling Ribbon



The PosiFlo Automatic Chub Feeder is a pump feeding unit that integrates with a variety of chub packaging systems.

VACUUM STUFFER

The Mepaco® Vacuum Stuffer is designed to pull and maintain full vacuum (29" Hg.) The stuffer gently agitates product in its vacuum chamber to expose more area to deaeration, which results in greater density and yield. It also prepares the product for gas or vacuum packaging with better color and shelf life.

Adaptable Feed Pressure

The speed of the metering pump is adaptable from 0 to 100% in order to maintain the set feed pressure for satisfying the demands of downstream devices.

Simple Operation and Control

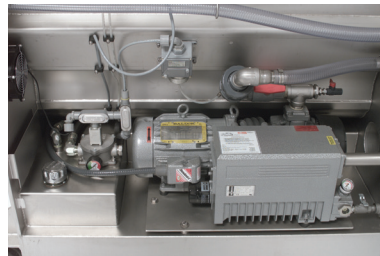
The product continuously feeds through a Deaeration Enhancing Inlet Valve (DEIV) connected by 6" tubing to any upstream device. The inlet valve automatically opens and closes according to the level of product in the chamber. Product entering the vacuum chamber is deflected by the cone-shaped DEIV and is spread out to expose more area to vacuum.

Throughput

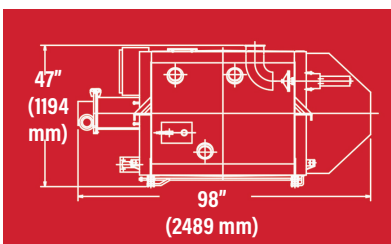
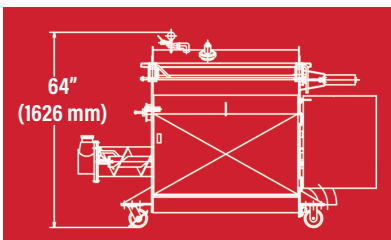
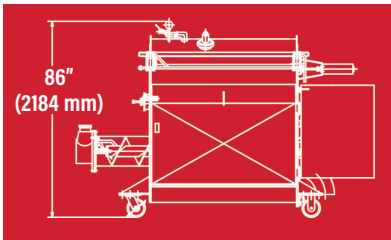
Product feed rate can be set for various operations. The metering pump will generate the required pressure needed to maintain the set feed rate within hydraulic drive parameters.



Vacuum Stuffer with Emulsifier



Onboard Vacuum Pump



SPECIFICATIONS

Size	Length: 98 inches (2489 mm) Width: 47 inches (1194 mm)
Height	Open Height: 86 inches (2184 mm) Closed Height: 64.38 inches (1626 mm)
Deaeration Chamber Capacity	24 cu ft (.68 cu m), 1200 lbs (544 kg) nominal
Maximum Pressure	150 psi (10.34 bar)
Electric Power Unit	20 HP gearmotor on the feedscrew
Vacuum Pump	5 HP (3.7 kw)
Air Required	2 cu ft (.056 cu m) at 100 psi (6.89 bar) per cover opening
Outlet Size	3 inches (762 cm)

*Maximum throughput dependent on product, screw type and drive.

STANDARD EQUIPMENT

- Power operated cover with 1.25" FPT vacuum fitting, Lexan view windows and safety interlock
- Onboard load sensing system
- Conductance style probe Hi/Lo level control system
- Combination solid flight/paddle agitator
- 3" stainless steel feed pump
- Stainless hydraulic oil reservoir and base frame
- Large capacity hydraulic oil heat exchanger (water cooled)
- NEMA 4X control enclosure, 230/460 VAC, 3 phase, 60Hz
- 115 VAC control package with Power On/Off and Feedscrew On/Off

APPLICATION CUSTOMIZATION

- Clean-in-place (CIP) spray ball / system
- Non-standard deaeration chamber size
- Installation supervision and start-up service
- Parts cart