

VACUUM STUFFER

The Mepaco® Vacuum Stuffer is designed to pull and maintain full vacuum (29" Hg.) The stuffer gently agitates product in its vacuum chamber to expose more area to deaeration, which results in greater density and yield. It also prepares the product for gas or vacuum packaging with better color and shelf life.

Adaptable Feed Pressure

The speed of the metering pump is adaptable from 0 to 100% in order to maintain the set feed pressure for satisfying the demands of downstream devices.

Simple Operation and Control

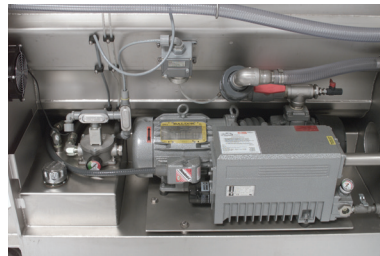
The product continuously feeds through a Deaeration Enhancing Inlet Valve (DEIV) connected by 6" tubing to any upstream device. The inlet valve automatically opens and closes according to the level of product in the chamber. Product entering the vacuum chamber is deflected by the cone-shaped DEIV and is spread out to expose more area to vacuum.

Throughput

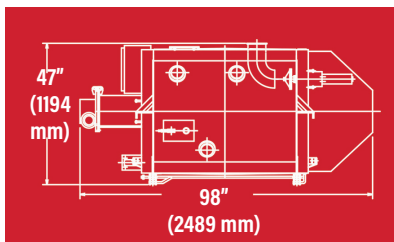
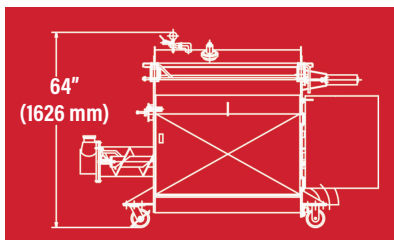
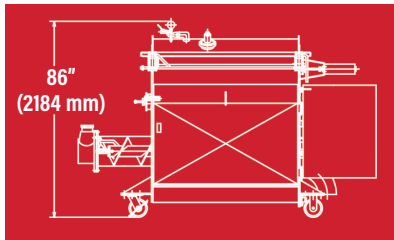
Product feed rate can be set for various operations. The metering pump will generate the required pressure needed to maintain the set feed rate within hydraulic drive parameters.



Vacuum Stuffer with Emulsifier



Onboard Vacuum Pump



SPECIFICATIONS

Size	Length: 98 inches (2489 mm) Width: 47 inches (1194 mm)
Height	Open Height: 86 inches (2184 mm) Closed Height: 64.38 inches (1626 mm)
Deaeration Chamber Capacity	24 cu ft (.68 cu m) 1200 lbs (544 kg) nominal
Maximum Pressure	150 psi (10.34 bar)
Electric Power Unit	20 HP gearmotor on the feedscrew
Vacuum Pump	5 HP (3.7 kw)
Air Required	2 cu ft (.056 cu m) at 100 psi (6.89 bar) per cover opening
Outlet Size	3 inches (76.2 cm)

*Maximum throughput dependent on product, screw type and drive.

STANDARD EQUIPMENT

- Power operated cover with 1.25" FPT vacuum fitting, Lexan view windows and safety interlock
- Onboard load sensing system
- Conductance style probe Hi/Lo level control system
- Combination solid flight/paddle agitator
- 3" stainless steel feed pump
- Stainless hydraulic oil reservoir and base frame
- Large capacity hydraulic oil heat exchanger (water cooled)
- NEMA 4X control enclosure, 230/460 VAC, 3 phase, 60Hz
- 115 VAC control package with Power On/Off and Feedscrew On/Off

APPLICATION CUSTOMIZATION

- Clean-in-place (CIP) spray ball / system
- Non-standard deaeration chamber size
- Installation supervision and start-up service
- Parts cart